

BOILER AND RENEWABLE ENERGY SYSTEMS

PRODUCTS

‣ Single Coil Boiler	06-07
‣ Double Coil Boiler	08-09
‣ Accumulation Tank	10 - 11
‣ Buffer Tank	12 - 13
‣ Heat Pump Boilers	14 - 15
‣ Removable Copper Single Coil Boiler	16 - 17
‣ Removable Copper Double Coil Boiler	18 - 19
‣ Smart Series Electric Boilers	20 - 21
‣ Electric Boiler	22 - 23
‣ Solar Water Heaters (120 L - 300 L)	24 - 25
‣ Solar Water Heaters (500 L - 1.250 L)	26 - 27
‣ Horizontal Walled Boilers (1.500 L - 5.000 L)	28 - 29
‣ Horizontal Wall-mounted Coil Boiler	30 - 31

Our Vision

To be one of the world's largest boiler manufacturers, producing high-quality and economic products globally, and to be the consumers' first choice in terms of service and product quality.

Our Mission

To provide our reliable, high-quality and economical products to our domestic and international customers in a manner that is compatible with human and environmental health.

Values

Experience, technology, knowledge base, innovation and development...





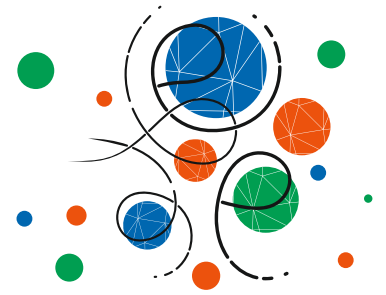
About Us

With a quarter-century of experience, we manufacture boilers, accumulation tanks and buffer tanks for our valued dealers and consumers in our 7,000 m² closed factory area in Kemalpaşa, Izmir.

As followers of developing technology, we continue to serve you with our constantly updated machinery and production area, which is entirely within our own premises.



SINGLE COIL BOILERS



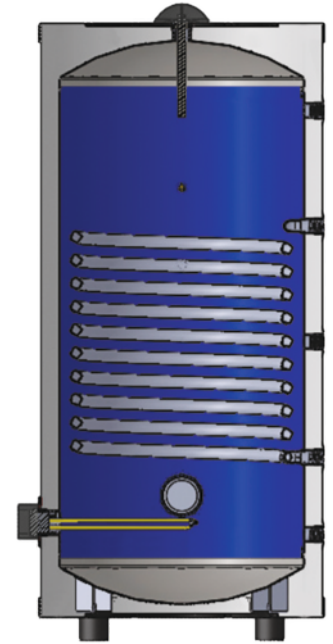
Volume: From 100 liters to 5.000 liters.
Maximum Coil Temperature: 110°C
Maximum Water Temperature: 90°C
Test Pressure: 13 Bar
Operating Pressure: 10 Bar
Internal Surface Coating: Enamel

Outer Cover

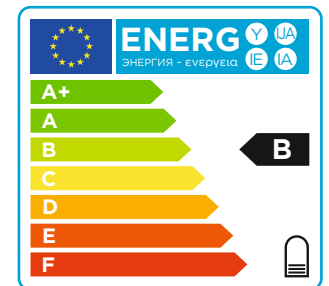
100 liter polyurethane over galvanised anthracite electrostatically powder coated or anthracite vinyl leather covering optional,
Anthracite Winleks leather covering over polyurethane from 160 liters to 1.000 liters
Anthracite Winleks leather covering over foam from 1.500 liters to 5.000 liters.

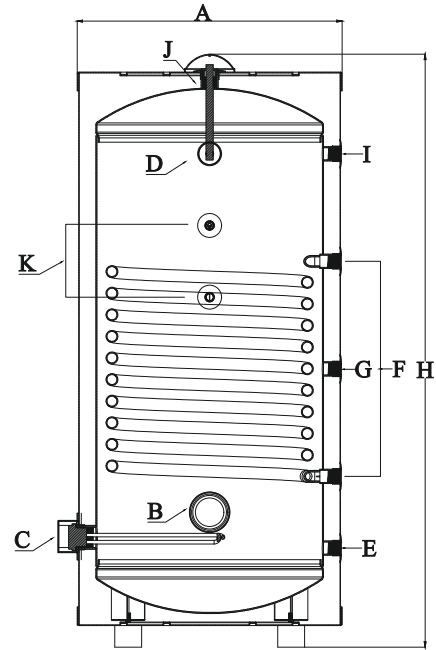
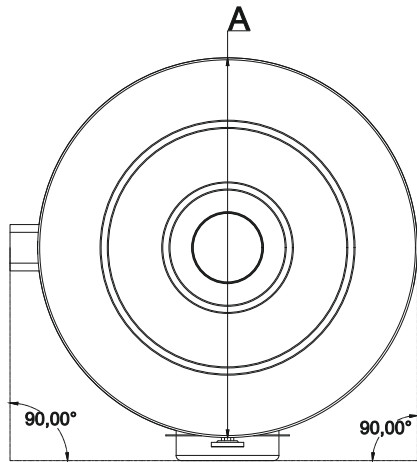
Insulation

Made of polyurethane with a density of 40 kg/m³ and a thickness of 50 mm for capacities ranging from 100 liters to 1.000 liters.
High-density special foam is used for capacities ranging from 1.500 liters to 5.000 liters.
High efficiency with a wider serpentine surface
Practical, economical, modern



- High efficiency with a wider serpentine surface
- Practical, economical, modern
- High-quality and certified materials
- Enamelled
- Cathodically protected
- Thermometer included
- Long-lasting and durable





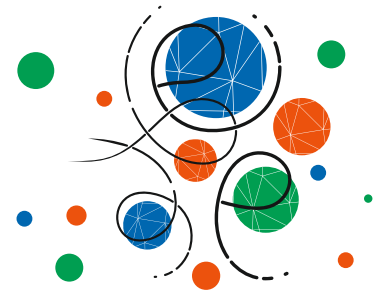
SINGLE COIL BOILERS TECHNICAL DETAILS

DEFINITION	CODE	UNIT	100	160	200	300	500	800	1000	1500	2000	2500	3000	4000	5000
Volume	V	Liter	100	160	200	300	500	800	1000	1500	2000	2500	3000	4000	5000
Insulation Type	-	type	PU	PU	PU	PU	PU	PU	PU	Sponge	Sponge	Sponge	Sponge	Sponge	Sponge
Insulation Thickness	-	mm	50	50	50	50	50	50	50	50	50	50	50	50	50
Diameter	A	mm	450	550	550	650	750	850	950	1200	1200	1380	1380	1450	1650
Height	H	mm	1150	1150	1380	1650	1650	1700	2100	2000	2300	2300	2400	2850	2850
Cleaning Flange	B	DN	-	-	-	115	115	115	115	200	200	200	200	200	200
Resistance Connection	C	inch	1 1/4	1 1/4	1 1/4	1 1/4	2	2	2	2	2	2	2	2	2
Number of Heater Sleeves	-	pcs.	1	1	1	1	1	2	2	2	2	2	2	2	2
Thermometer Housing	D	inch	1/2	1/2	1/2	1/2	1/2	1/2	1/2	1/2	1/2	1/2	1/2	1/2	1/2
Cold Water Inlet Conn.	E	inch	3/4	3/4	3/4	1	1	1 1/4	1 1/4	2	2	2	2	3	3
Coil Inlet Outlet Conn.	F	inch	3/4	3/4	1	1	1	1 1/4	1 1/4	1 1/4	1 1/4	1 1/4	1 1/4	1 1/4	1 1/4
Coil Heating Surface	-	m ²	0,61	0,9	1,38	1,65	2,4	2,9	3,5	4,6	5,1	6,1	6,5	8,1	9,4
Circulation Connection	G	inch	3/4	3/4	3/4	1	1	1 1/4	1 1/4	1 1/4	1 1/4	1 1/4	1 1/4	2	2
Hot Water Outlet Conn.	I	inch	3/4	3/4	3/4	1	1	1 1/4	1 1/4	2	2	2	2	3	3
Anode Rod Connection	J	inch	1 1/4	1 1/4	1 1/4	1 1/4	1 1/4	1 1/4	1 1/4	1 1/4	1 1/4	1 1/4	1 1/4	1 1/4	1 1/4
Heat Probe Socket	K	inch	1/2	1/2	1/2	1/2	1/2	1/2	1/2	1/2	1/2	1/2	1/2	1/2	1/2
Dry Weight	-	kg	44	60	78	119	160	216	271	420	520	670	770	900	1150
Area Covered	-	m ³	0,25	0,37	0,45	0,87	1,02	1,30	1,94	2,88	3,32	4,70	5,06	6,00	7,75
Outer Casing	-	type	Metal	Vinlex	Vinlex	Vinlex	Vinlex	Vinlex	Vinlex	Vinlex	Vinlex	Vinlex	Vinlex	Vinlex	Vinlex

Note: OMEGA YENİLENEBİLİR ENERJİ LTD. ŞTİ. reserves the right to make alterations to the design dimensions. Please allow a tolerance of ±20 cm for product dimensions during shipping.



DOUBLE COIL BOILERS



Volume: From 160 liters to 5.000 liters
Maximum Coil Temperature: 110°C
Maximum Hot Water Temperature: 90°C
Test Pressure: 13 Bar
Operating Pressure: 10 Bar
Internal Surface Coating: Enamel

Outer Cover

Anthracite Winleks leather covering over polyurethane from 160 liters to 1.000 liters.

Anthracite Winleks leather covering over foam from 1.500 liters to 5.000 liters.

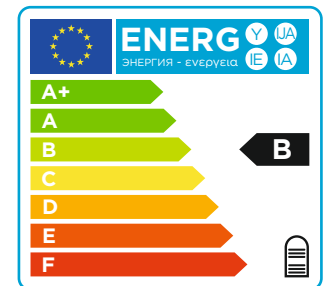
Insulation

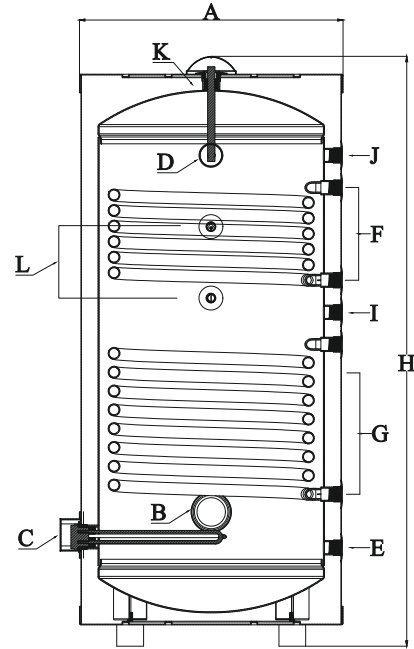
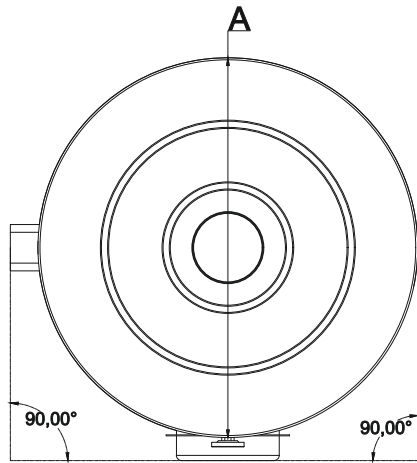
Made of polyurethane with a density of 40 kg/m³ and a thickness of 50 mm for capacities ranging from 160 liters to 1.000 liters.

High-density special foam is used for capacities ranging from 1.500 liters to 5.000 liters.



- High efficiency with a wider serpentine surface
- Practical, economical, modern
- High-quality and certified materials
- Enamelled
- Cathodically protected
- Thermometer included
- Long-lasting and durable





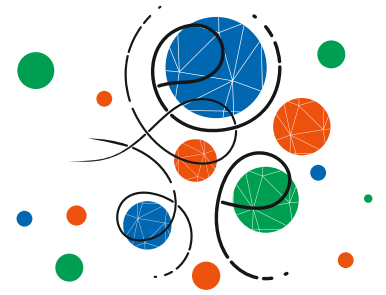
DOUBLE COIL BOILERS TECHNICAL DETAILS

DEFINITION	CODE	UNIT												
Volume	V	Liter	160	200	300	500	800	1000	1500	2000	2500	3000	4000	5000
Insulation Type	-	type	PU	PU	PU	PU	PU	PU	Sponge	Sponge	Sponge	Sponge	Sponge	Sponge
Insulation Thickness	-	mm	50	50	50	50	50	50	50	50	50	50	50	50
Diameter	A	mm	550	550	650	750	850	950	1200	1200	1380	1380	1450	1650
Height	H	mm	1150	1380	1650	1650	1700	2100	2000	2300	2300	2400	2850	2850
Cleaning Flange	B	DN	-	-	115	115	115	115	200	200	200	200	200	200
Resistance Connection	C	inch	1 1/4	1 1/4	1 1/4	2	2	2	2	2	2	2	2	2
Number of Heater Sleeves	-	pcs.	1	1	1	1	2	2	2	2	2	2	2	2
Thermometer Housing	D	inch	1/2	1/2	1/2	1/2	1/2	1/2	1/2	1/2	1/2	1/2	1/2	1/2
Cold Water Inlet Connection	E	inch	3/4	3/4	1	1	1 1/4	1 1/4	2	2	2	2	3	3
Upper Coil Inlet/Outlet Conn.	F	inch	3/4	1	1	1	1 1/4	1 1/4	1 1/4	1 1/4	1 1/4	1 1/4	1 1/4	1 1/4
Lower Coil Inlet/Outlet Conn.	G	inch	3/4	1	1	1	1 1/4	1 1/4	1 1/4	1 1/4	1 1/4	1 1/4	1 1/4	1 1/4
Upper Coil Heating Surface	-	m ²	0,51	0,6	1	1,25	1,35	2	2,2	2,97	2,97	4,53	4,8	5,65
Lower Coil Heating Surface	-	m ²	0,61	0,95	1,15	1,85	2	2,83	2,97	4,25	4,53	5,6	5,95	6,8
Circulation Connection	I	inch	3/4	3/4	1	1	1 1/4	1 1/4	1 1/4	1 1/4	1 1/4	1 1/4	2	2
Hot Water Outlet Connection	J	inch	3/4	3/4	1	1	1 1/4	1 1/4	2	2	2	2	3	3
Anode Rod Connection	K	inch	1 1/4	1 1/4	1 1/4	1 1/4	1 1/4	1 1/4	1 1/4	1 1/4	1 1/4	1 1/4	1 1/4	1 1/4
Thermocouple Socket	L	inch	1/2	1/2	1/2	1/2	1/2	1/2	1/2	1/2	1/2	1/2	1/2	1/2
Dry Weight	-	kg	64	82	131	175	228	304	492	643	735	818	1014	1210
Area Covered	-	m ³	0,37	0,45	0,87	1,02	1,30	1,94	2,88	3,32	4,70	5,06	6,00	7,75
Outer Casing	-	type	Vinlex	Vinlex	Vinlex	Vinlex	Vinlex	Vinlex	Vinlex	Vinlex	Vinlex	Vinlex	Vinlex	Vinlex

Note: OMEGA YENİLENEBİLİR ENERJİ LTD. ŞTİ. reserves the right to make alterations to the design dimensions. Please allow a tolerance of ±20 cm for product dimensions during shipping.



ACCUMULATION TANK



Volume: From 50 liters to 5.000 liters.
Maximum Water Temperature: 90°C
Test Pressure: 13 Bar
Operating Pressure: 10 Bar
Inner Surface Coating: Enamel

Outer Cover

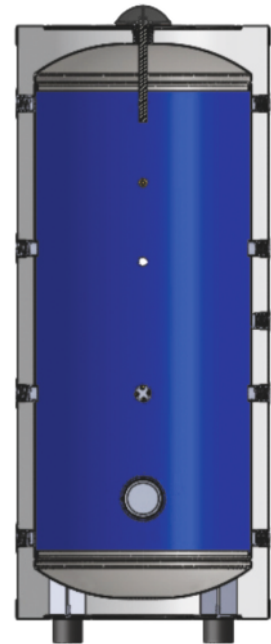
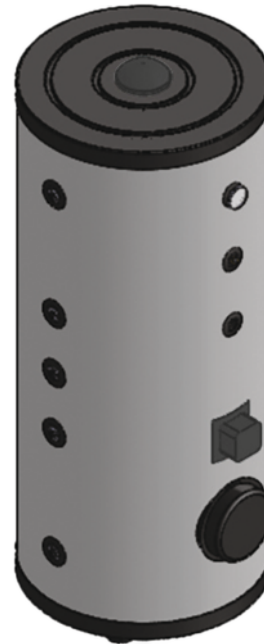
50 and 100 liter, Polyurethane-coated galvanised anthracite grey electrostatically powder-coated or anthracite vinyl leather-coated option, 160 to 800 liters, Polyurethane-coated anthracite vinyl leather-coated.

From 1.000 liters to 5.000 liters, anthracite vinyl leather coating over foam.

Insulation

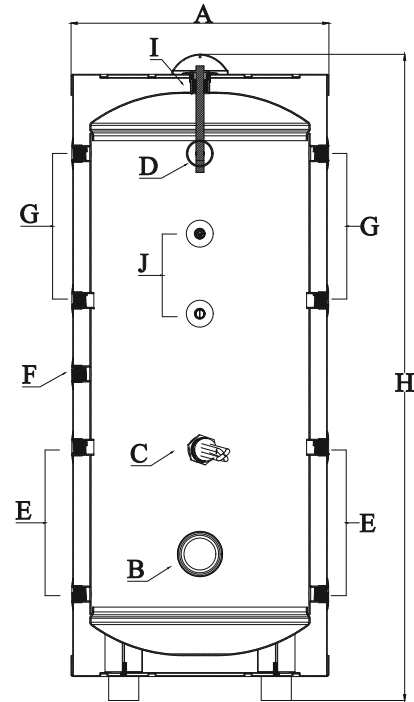
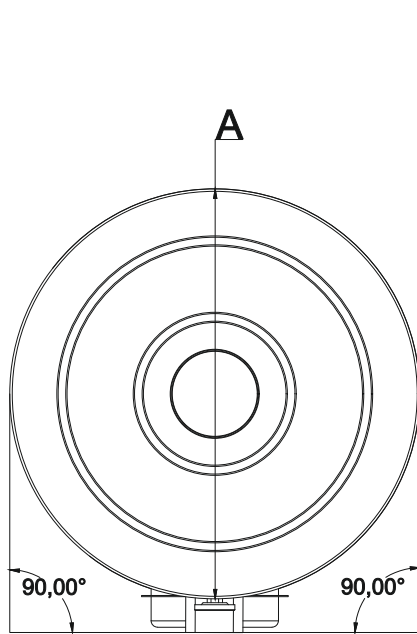
Made of polyurethane with a thickness of 50 mm and a density of 40 kg/m³ for capacities ranging from 50 liters to 800 liters.

High-density special foam is used for capacities ranging from 1.000 liters to 5.000 liters.



- Practical, Economical, Modern
- High-quality and certified materials
- Enamelled
- Cathodically protected
- Thermometer included
- Long-lasting and durable





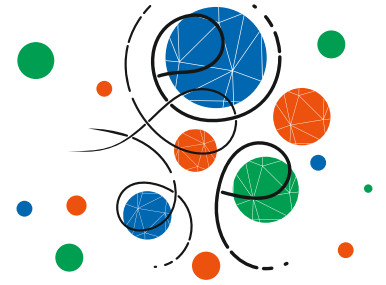
ACCUMULATION TANK TECHNICAL DETAILS

DEFINITION	CODE	UNIT	50	100	160	200	300	500	600	800	1000	1250	1500	2000	2500	3000	4000	5000
Volume	V	Liter	50	100	160	200	300	500	600	800	1000	1250	1500	2000	2500	3000	4000	5000
Insulation Type	-	type	PU	PU	PU	PU	PU	PU	Sponge	PU	Sponge	Sponge	Sponge	Sponge	Sponge	Sponge	Sponge	Sponge
Insulation Thickness	-	mm	50	50	50	50	50	50	50	50	50	50	50	50	50	50	50	50
Diameter	A	mm	450	450	550	550	650	750	850	850	950	1050	1200	1200	1380	1380	1450	1650
Height	H	mm	700	1150	1150	1380	1650	1650	1600	1700	2100	2000	2000	2300	2300	2400	2850	2850
Cleaning Flange	B	DN	-	-	-	-	115	115	115	115	115	200	200	200	200	200	200	200
Resistance Connection	C	inch	1 1/4	1 1/4	1 1/4	1 1/4	1 1/4	1 1/4	2	2	2	2	2	2	2	2	2	2
Number of Heater Muff.	-	pcs.	1	1	1	1	1	1	2	2	2	2	2	2	2	2	2	2
Thermometer Housing	D	inch	1/2	1/2	1/2	1/2	1/2	1/2	1/2	1/2	1/2	1/2	1/2	1/2	1/2	1/2	1/2	1/2
System Water Inlet Con.	E	inch	1	1 1/4	1 1/4	1 1/4	1 1/4	1 1/4	1 1/4	1 1/4	1 1/4	1 1/4	2	2	2	2	3	3
N of Inlet/Outlet Muff.	-	pcs.	4	4	4	4	8	8	8	8	8	8	8	8	8	8	8	8
Circulation Connection	F	inch	-	1	1	1	1	1 1/4	1 1/4	1 1/4	1 1/4	1 1/4	1 1/4	1 1/4	1 1/4	1 1/4	2	2
Hot Water Outlet Conn.	G	inch	1	1 1/4	1 1/4	1 1/4	1 1/4	1 1/4	1 1/4	1 1/4	1 1/4	1 1/4	2	2	2	2	3	3
Anode Rod Conn.	I	inch	1 1/4	1 1/4	1 1/4	1 1/4	1 1/4	1 1/4	1 1/4	1 1/4	1 1/4	1 1/4	1 1/4	1 1/4	1 1/4	1 1/4	1 1/4	1 1/4
Heat Probe Socket	J	inch	1/2	1/2	1/2	1/2	1/2	1/2	1/2	1/2	1/2	1/2	1/2	1/2	1/2	1/2	1/2	1/2
Dry Weight	-	kg	24	36	50	60	93	140	175	195	212	230	360	510	575	680	780	900
Area Covered	-	m ³	0,18	0,25	0,37	0,45	0,87	1,02	1,15	1,3	1,94	2,2	2,88	3,32	4,70	5,06	6,00	7,75
Outer Casing	-	type	Metal	Metal	Vinlex	Vinlex	Vinlex	Vinlex	Vinlex	Vinlex	Vinlex	Vinlex	Vinlex	Vinlex	Vinlex	Vinlex	Vinlex	Vinlex

Note: OMEGA YENİLENEBİLİR ENERJİ LTD. ŞTİ. reserves the right to make alterations to the design dimensions. Please allow a tolerance of ±20 cm for product dimensions during shipping.



BUFFER TANK



Volume: From 50 liters to 5.000 liters.
Maximum Water Temperature: 90°C
Test Pressure: 13 bar
Operating Pressure: 10 bar

Outer Cover

50 and 100 liter polyurethane over galvanised anthracite grey electrostatically powder coated or anthracite vinyl leather covering optional,

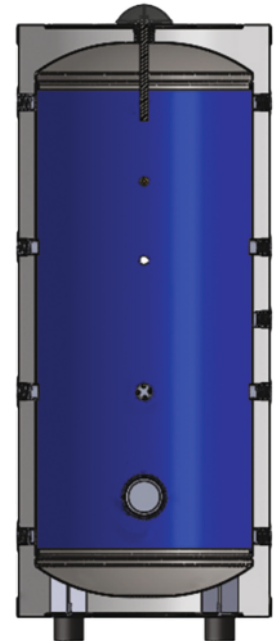
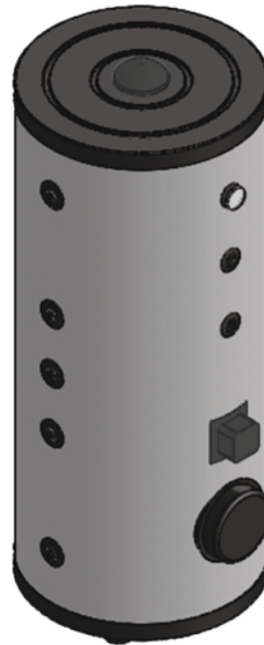
160 liters to 800 liters polyurethane over anthracite vinyl leather covering.

From 1.000 liters to 5.000 liters, anthracite vinyl leather coating over foam.

Insulation

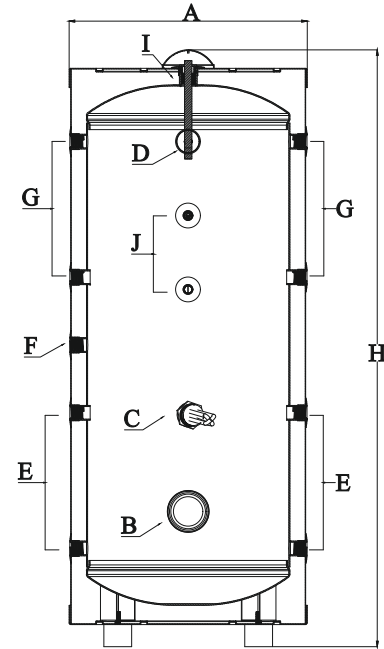
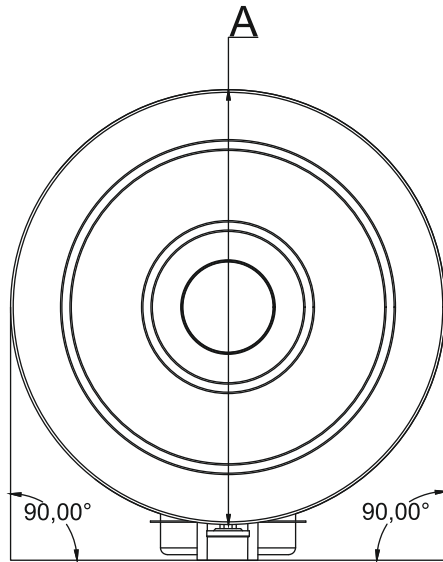
Made of polyurethane with a thickness of 50 mm and a density of 40 kg/m³ for capacities ranging from 50 liters to 800 liters.

High-density special foam is used for capacities ranging from 1.000 liters to 5.000 liters.



- Practical, Economical, Modern
- High-quality and certified materials
- High Efficiency
- Cathodically protected
- Thermometer included
- Long-lasting and durable





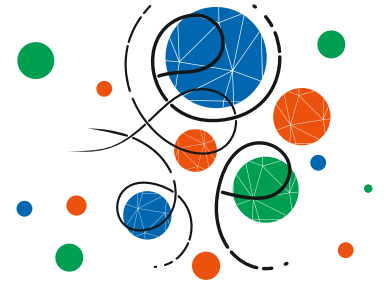
BUFFER TANK TECHNICAL DETAILS

DEFINITION	CODE	UNIT	50	100	160	200	300	500	800	1000	1500	2000	2500	3000	4000	5000
Volume	V	Liter	50	100	160	200	300	500	800	1000	1500	2000	2500	3000	4000	5000
Insulation Type	-	type	PU	PU	PU	PU	PU	PU	PU	Sponge	Sponge	Sponge	Sponge	Sponge	Sponge	Sponge
Insulation Thickness	-	mm	50	50	50	50	50	50	50	50	50	50	50	50	50	50
Diameter	A	mm	450	450	550	550	650	750	850	950	1200	1200	1380	1380	1450	1650
Height	H	mm	700	1150	1150	1380	1650	1650	1700	2100	2000	2300	2300	2400	2850	2850
Cleaning Flange	B	DN	-	-	-	-	115	115	115	115	200	200	200	200	200	200
Resistance Connection	C	inch	1 1/4	1 1/4	1 1/4	1 1/4	1 1/4	1 1/4	2	2	2	2	2	2	2	2
Number of Heater Mufflers	-	pcs.	1	1	1	1	1	1	2	2	2	2	2	2	2	2
Thermometer Housing	D	inch	1/2	1/2	1/2	1/2	1/2	1/2	1/2	1/2	1/2	1/2	1/2	1/2	1/2	1/2
System Water Inlet Conn.	E	inch	1	1 1/4	1/4	1 1/4	1 1/4	1 1/4	1 1/4	1 1/4	2	2	2	2	3	3
Num.of Inlet/Outlet Mufflers	-	pcs.	4	4	4	4	8	8	8	8	8	8	8	8	8	8
Circulation Connection	F	inch	-	1	1	1	1	1 1/4	1 1/4	1 1/4	1 1/4	1 1/4	1 1/4	1 1/4	2	2
Hot Water Outlet Conn.	G	inch	1	1 1/4	1/4	1 1/4	1 1/4	1 1/4	1 1/4	1 1/4	2	2	2	2	3	3
Anode Rod Connection	I	inch	1 1/4	1 1/4	1 1/4	1 1/4	1 1/4	1 1/4	1 1/4	1 1/4	1 1/4	1 1/4	1 1/4	1 1/4	1 1/4	1 1/4
Heat Probe Socket	J	inch	1/2	1/2	1/2	1/2	1/2	1/2	1/2	1/2	1/2	1/2	1/2	1/2	1/2	1/2
Dry Weight	-	kg	24	36	50	60	93	140	195	212	360	510	575	680	780	900
Area Covered	-	m ³	0,18	0,25	0,37	0,45	0,87	1,02	1,3	1,94	2,88	3,32	4,70	5,06	6,00	7,75
Outer Casing	-	type	Metal	Metal	Vinlex	Vinlex	Vinlex	Vinlex	Vinlex	Vinlex	Vinlex	Vinlex	Vinlex	Vinlex	Vinlex	Vinlex

Note: OMEGA YENİLENEBİLİR ENERJİ LTD. ŞTİ. reserves the right to make alterations to the design dimensions. Please allow a tolerance of ±20 cm for product dimensions during shipping.



HEAT PUMP BOILERS



Volume: 200 liters to 1.000 liters.
Maximum Coil Temperature: 110°C
Maximum Water Temperature: 90°C
Test Pressure: 13 Bar
Operating Pressure: 10 Bar
Internal Surface Coating: Enamel

Outer Cover

Polyurethane with anthracite winleks leather covering.

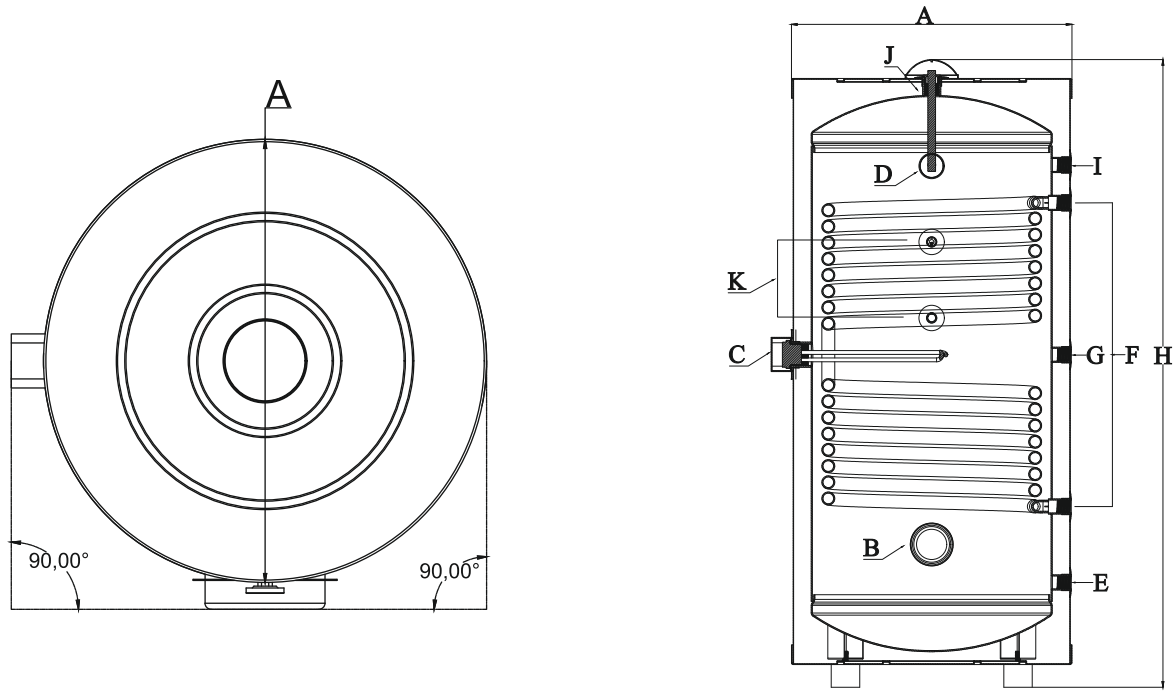
Insulation

Made of polyurethane with a thickness of 50 mm and a density of 40 kg/m³



- High efficiency with a wider serpentine surface
- Practical, economical, modern
- High-quality and certified materials
- Enamelled
- Cathodically protected
- Thermometer included
- Long-lasting and durable





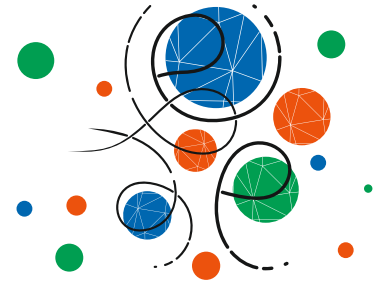
HEAT PUMP BOILERS TECHNICAL DETAILS

DEFINITION	CODE	UNIT	200	300	500	800	1000
Volume	V	Liter	200	300	500	800	1000
Insulation Type	-	type	PU	PU	PU	PU	PU
Insulation Thickness	-	mm	50	50	50	50	50
Diameter	A	mm	550	650	750	850	950
Height	H	mm	1380	1650	1650	1700	2100
Cleaning Flange	B	DN	-	115	115	115	115
Resistance Connection	C	inch	1 1/2	1 1/2	1 1/2	2	2
Number of Heater Sleeves	-	pcs.	1	1	1	1	1
Thermometer Housing	D	inch	1/2	1/2	1/2	1/2	1/2
Cold Water Inlet Connection	E	inch	3/4	1	1	1	1
Coil Inlet/Outlet Connection	F	inch	1	1	1	1 1/4	1 1/4
Coil Heating Surface	-	m ²	2,2	2,7	3,4	3,62	5,88
Circulation Connection	G	inch	3/4	1	1	1	1
Hot Water Outlet Connection	I	inch	3/4	1	1	1	1
Anode Rod Connection	J	inch	1 1/4	1 1/4	1 1/4	1 1/4	1 1/4
Thermocouple Socket	K	inch	1/2	1/2	1/2	1/2	1/2
Dry Weight	-	kg	89	136	175	235	312
Area Covered	-	m ³	0,45	0,87	1,02	1,3	1,94
Outer Casing	-	type	Vinlex	Vinlex	Vinlex	Vinlex	Vinlex

Note: OMEGA YENİLENEBİLİR ENERJİ LTD. ŞTİ. reserves the right to make alterations to the design dimensions. Please allow a tolerance of ±20 cm for product dimensions during shipping.



REMOVABLE COPPER SINGLE COIL BOILER



Volume: From 300 liters to 5.000 liters.

Maximum Coil Temperature: 110°C

Maximum Water Temperature: 90°C

Test Pressure: 13 Bar

Operating Pressure: 10 Bar

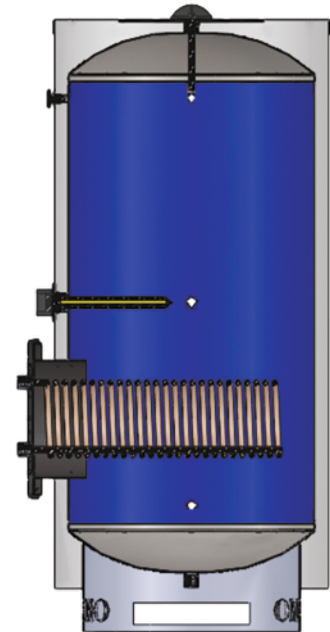
Inner Surface Coating: Enamel

Outer Cover

Anthracite vinyl leather covering over sponge.

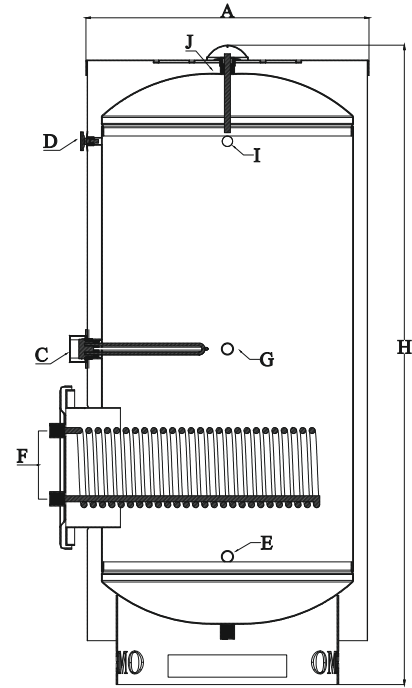
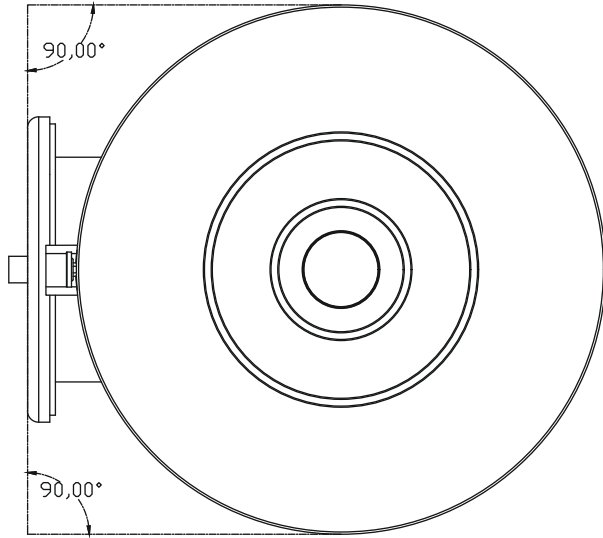
Insulation

High-density special sponge has been used.



- Highly efficient with a wider coil surface area.
- Practical, economical, modern.
- High-quality and certified materials.
- Enamelled.
- Cathodically protected.
- Thermometer included.
- Long-lasting and durable.





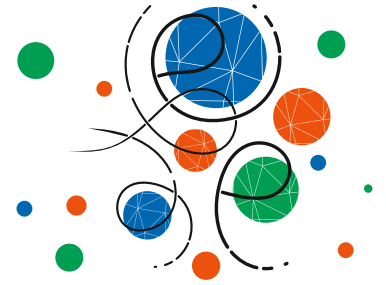
REMOVABLE COPPER SINGLE COIL BOILER TECHNICAL DETAILS

DEFINITION	CODE	UNIT	300	500	800	1000	1500	2000	2500	3000	4000	5000
Volume	V	Liter	300	500	800	1000	1500	2000	2500	3000	4000	5000
Insulation Type	-	type	Sponge	Sponge	Sponge	Sponge	Sponge	Sponge	Sponge	Sponge	Sponge	Sponge
Insulation Thickness	-	mm	50	50	50	50	50	50	50	50	50	50
Diameter	A	mm	650	750	850	950	1200	1200	1380	1380	1450	1650
Height	H	mm	1650	1650	1700	2100	2000	2300	2300	2400	2850	2850
Removable Coil Flange	B	DN	200	200	400	400	400	400	400	400	400	400
Resistance Connection	C	inch	2	2	2	2	2	2	2	2	2	2
Number of Heater Sleeves	-	pcs.	1	1	1	1	1	1	1	1	1	1
Thermometer Housing	D	inch	1/2	1/2	1/2	1/2	1/2	1/2	1/2	1/2	1/2	1/2
Cold Water Inlet Connection	E	inch	1	1	1 1/4	1 1/4	2	2	2	2	3	3
Removable Coil Inlet/Outlet Conn.	F	inch	3/4	3/4	1	1	1	1	1	1	1	1
Copper Coil Heating Surface	-	m ²	0,9	1,2	3,3	3,9	5	5	5,8	5,8	6,5	8
Circulation Connection	G	inch	1	1	1 1/4	1 1/4	1 1/4	1 1/4	1 1/4	1 1/4	2	2
Hot Water Outlet Connection	I	inch	1	1	1 1/4	1 1/4	2	2	2	2	3	3
Anode Rod Connection	J	inch	1 1/4	1 1/4	1 1/4	1 1/4	1 1/4	1 1/4	1 1/4	1 1/4	1 1/4	1 1/4
Dry Weight	-	kg	110	155	220	245	392	542	610	715	820	950
Area Covered	-	m ³	0,87	1,02	1,30	1,94	2,88	3,32	4,70	5,06	6,00	7,75
Outer Casing	-	type	Vinlex	Vinlex	Vinlex	Vinlex	Vinlex	Vinlex	Vinlex	Vinlex	Vinlex	Vinlex

Note: OMEGA YENİLENEBİLİR ENERJİ LTD. ŞTİ. reserves the right to make alterations to the design dimensions. Please allow a tolerance of ±20 cm for product dimensions during shipping.



REMOVABLE COPPER DOUBLE COIL BOILER



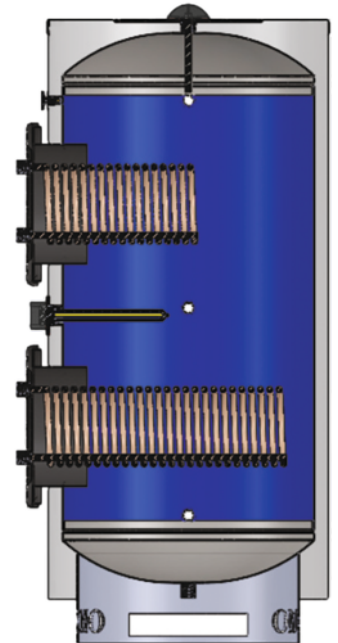
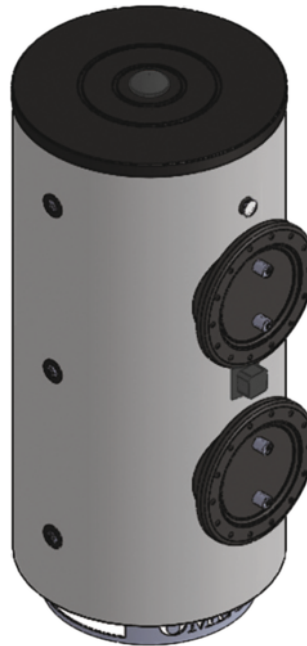
Volume: 300 liters to 5.000 liters.
Maximum Coil Temperature: 110°C
Maximum Water Temperature: 90°C
Test Pressure: 13 Bar
Operating Pressure: 10 Bar
Inner Surface Coating: Enamel

Outer Cover

Anthracite vinyl leather covering over sponge.

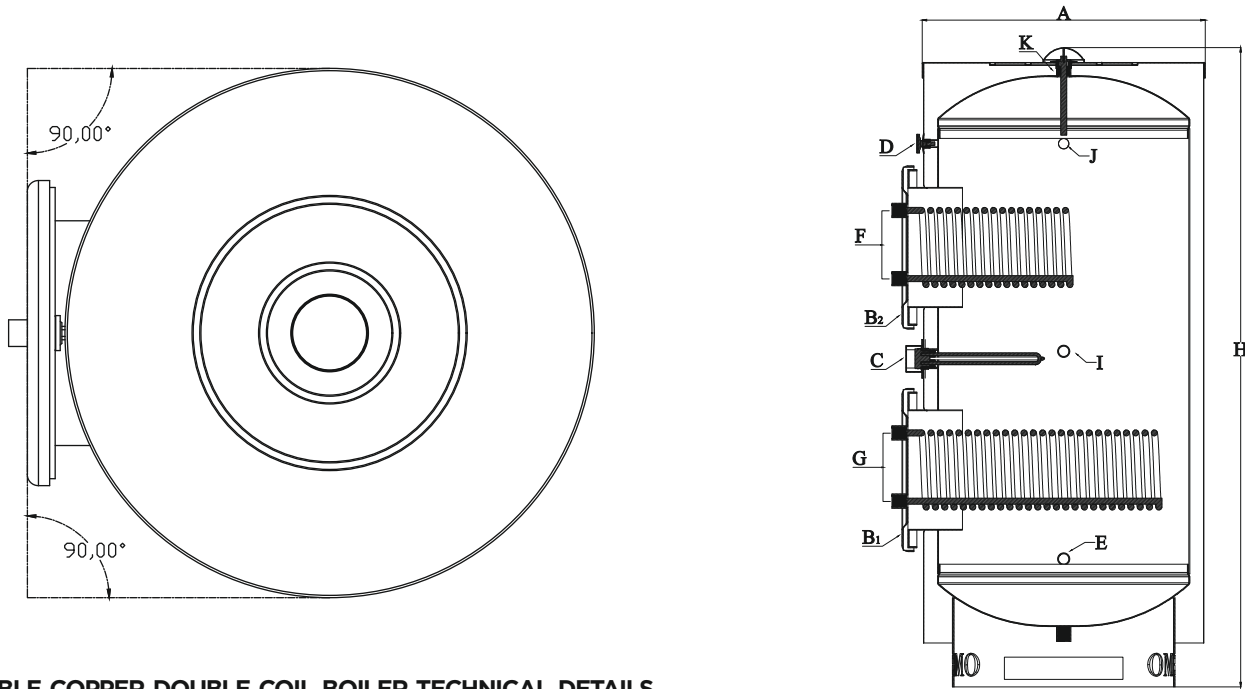
Insulation

High-density special sponge has been used.



- Highly efficient with a wider coil surface area
- Practical, economical, modern
- High-quality and certified materials
- Enamelled
- Cathodically protected
- Thermometer included
- Long-lasting and durable





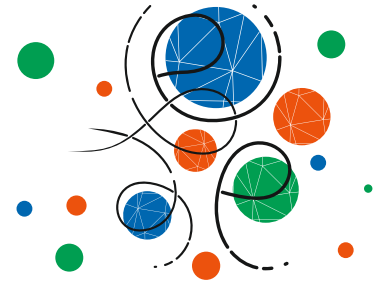
REMOVABLE COPPER DOUBLE COIL BOILER TECHNICAL DETAILS

DEFINITION	CODE	UNIT	300	500	800	1000	1500	2000	2500	3000	4000	5000
Volume	V	Liter	300	500	800	1000	1500	2000	2500	3000	4000	5000
Insulation Type	-	type	Sponge	Sponge	Sponge	Sponge	Sponge	Sponge	Sponge	Sponge	Sponge	Sponge
Insulation Thickness	-	mm	50	50	50	50	50	50	50	50	50	50
Diameter	A	mm	650	750	850	950	1200	1200	1380	1380	1450	1650
Height	H	mm	1650	1650	1700	2100	2000	2300	2300	2400	2850	2850
Removable Coil Flange	B	DN	200	200	400	400	400	400	400	400	400	400
Resistance Connection	C	inch	2	2	2	2	2	2	2	2	2	2
Number of Heater Sleeves	-	pcs.	1	1	1	1	1	1	1	1	1	1
Thermometer Housing	D	inch	1/2	1/2	1/2	1/2	1/2	1/2	1/2	1/2	1/2	1/2
Cold Water Inlet Connection	E	inch	1	1	1 1/4	1 1/4	2	2	2	2	3	3
Upper Removable Coil Inlet Outlet Con.	F	inch	3/4	3/4	1	1	1	1	1	1	1	1
Lower Removable Coil Inlet Outlet Con.	G	inch	3/4	3/4	1	1	1	1	1	1	1	1
Upper Copper Coil Heating Surface	-	m ²	0,5	0,7	1,8	2,1	2,8	2,8	3,2	3,2	3,6	4,5
Lower Copper Coil Heating Surface	-	m ²	0,9	1,2	3,3	3,9	5	5	5,8	5,8	6,5	8
Circulation Connection	I	inch	1	1	1 1/4	1 1/4	1 1/4	1 1/4	1 1/4	1 1/4	2	2
Hot Water Outlet Connection	J	inch	1	1	1 1/4	1 1/4	2	2	2	2	3	3
Anode Rod Connection	K	inch	1 1/4	1 1/4	1 1/4	1 1/4	1 1/4	1 1/4	1 1/4	1 1/4	1 1/4	1 1/4
Dry Weight	-	kg	130	180	240	265	415	565	635	740	845	975
Area Covered	-	m ³	0,87	1,02	1,30	1,94	2,88	3,32	4,70	5,06	6,00	7,75
Outer Casing	-	type	Vinlex	Vinlex	Vinlex	Vinlex	Vinlex	Vinlex	Vinlex	Vinlex	Vinlex	Vinlex

Note: OMEGA YENİLENEBİLİR ENERJİ LTD. ŞTİ. reserves the right to make alterations to the design dimensions. Please allow a tolerance of ±20 cm for product dimensions during shipping.



SMART SERIES ELECTRIC BOILERS



Volume: 100 to 300 liters.
Maximum Water Temperature: 90°C
Test Pressure: 13 Bar
Operating Pressure: 10 Bar
Inner Surface Coating: Enamel

Outer Casing

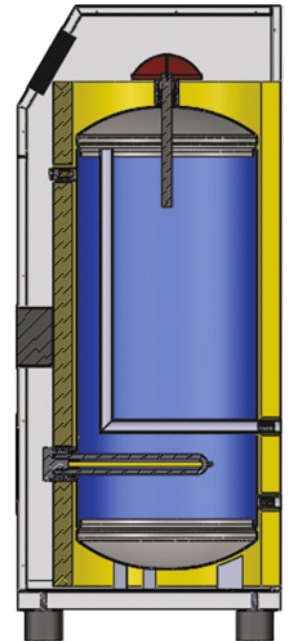
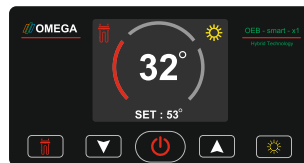
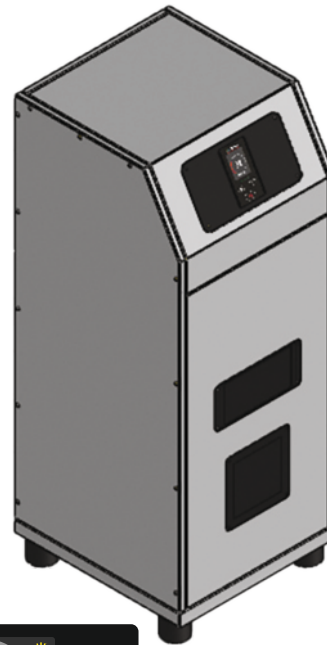
Polyurethane over galvanised anthracite grey electrostatically powder-coated

Insulation

Made of polyurethane with a thickness of 50 mm and a density of 40 kg/m³

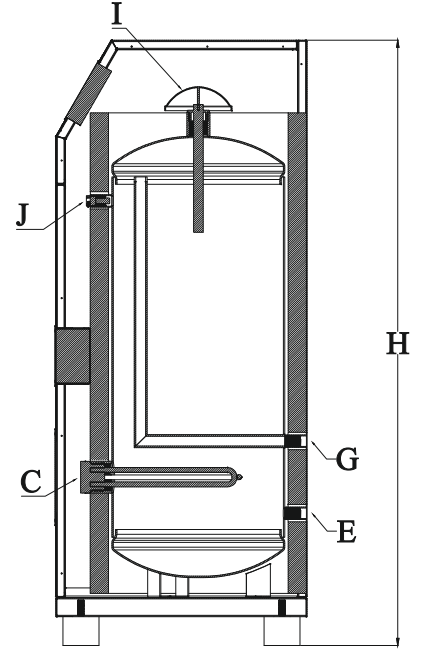
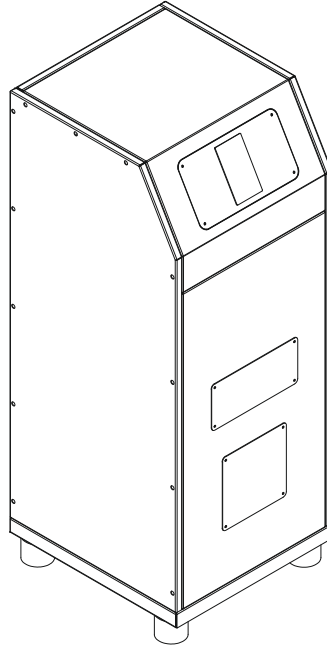
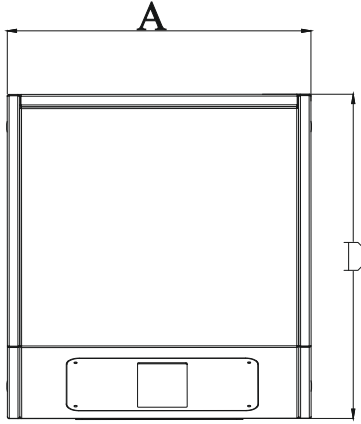
Digital Screen

The touchscreen provides ease of use. The desired hot water requirement can be easily adjusted on the screen. If desired, the device can be controlled remotely. Thanks to its smart feature, the water used has antibacterial properties.



- Practical, Economical, Modern
- High-quality and certified materials
- Enamelled
- Cathodically protected
- Digital display with thermometer
- Long-lasting and durable
- Electric





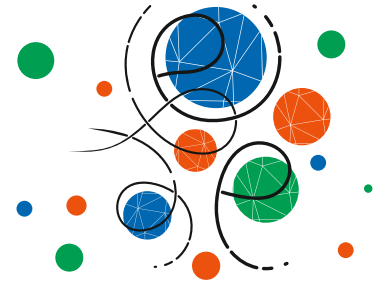
SMART SERIES ELECTRIC BOILERS TECHNICAL DETAILS

DEFINITION	CODE	UNIT	100	160	200	300
Volume	V	Liter	100	160	200	300
Insulation Type	-	type	PU	PU	PU	PU
Insulation Thickness	-	mm	50	50	50	50
Width	A	mm	490	590	590	690
Depth	D	mm	530	630	630	730
Height	H	mm	1300	1300	1500	1780
Cleaning Flange	B	DN	-	-	-	-
Resistance	-	KW	5	5	5	10
Resistance Connection	C	inch	1 1/4	1 1/4	1 1/4	1 1/4
Number of Heater Elements	-	pcs.	1	1	1	2
System Water Inlet Connection	E	inch	1/2	1/2	3/4	3/4
Hot Water Outlet Connection	G	inch	1/2	1/2	3/4	3/4
Anode Rod Connection	I	inch	1 1/4	1 1/4	1 1/4	1 1/4
Temperature Probe Socket	J	inch	1/2	1/2	1/2	1/2
Number of Mainboards	-	pcs.	1	1	1	1
Number of Digital Displays	-	pcs.	1	1	1	1
Dry Weight	-	kg	76	98	114	158
Area Covered	-	m ³	0,28	0,4	0,48	0,87
Outer Casing	-	type	Metal	Metal	Metal	Metal

Note: OMEGA YENİLENEBİLİR ENERJİ LTD. ŞTİ. reserves the right to make alterations to the design dimensions. Please allow a tolerance of ±20 cm for product dimensions during shipping.



ELECTRIC BOILER



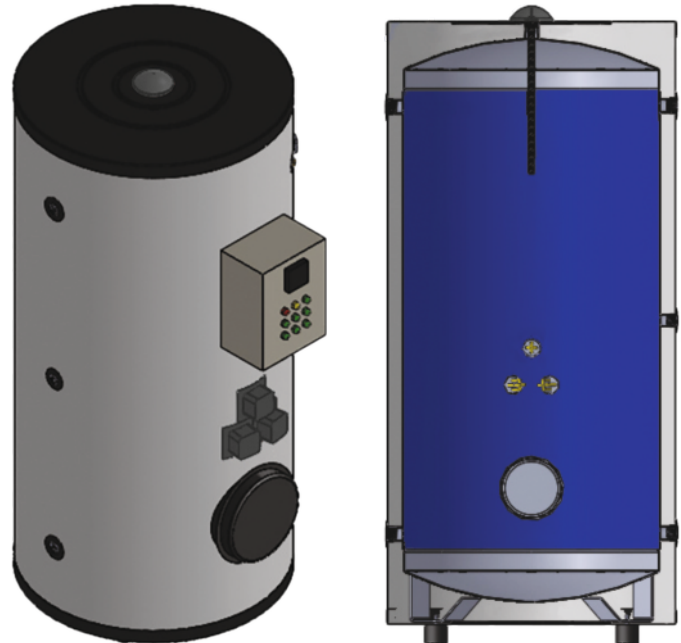
Volume: 200 liters to 2.000 liters.
Maximum Water Temperature: 90°C
Test Pressure: 13 Bar
Operating Pressure: 10 Bar
Inner Surface Coating: Enamel

Outer Cover

Polyurethane over anthracite vinyl leather coating for 500 to 1.000 liters.
Foam over anthracite vinyl leather coating for 1.500 to 2.000 liters.

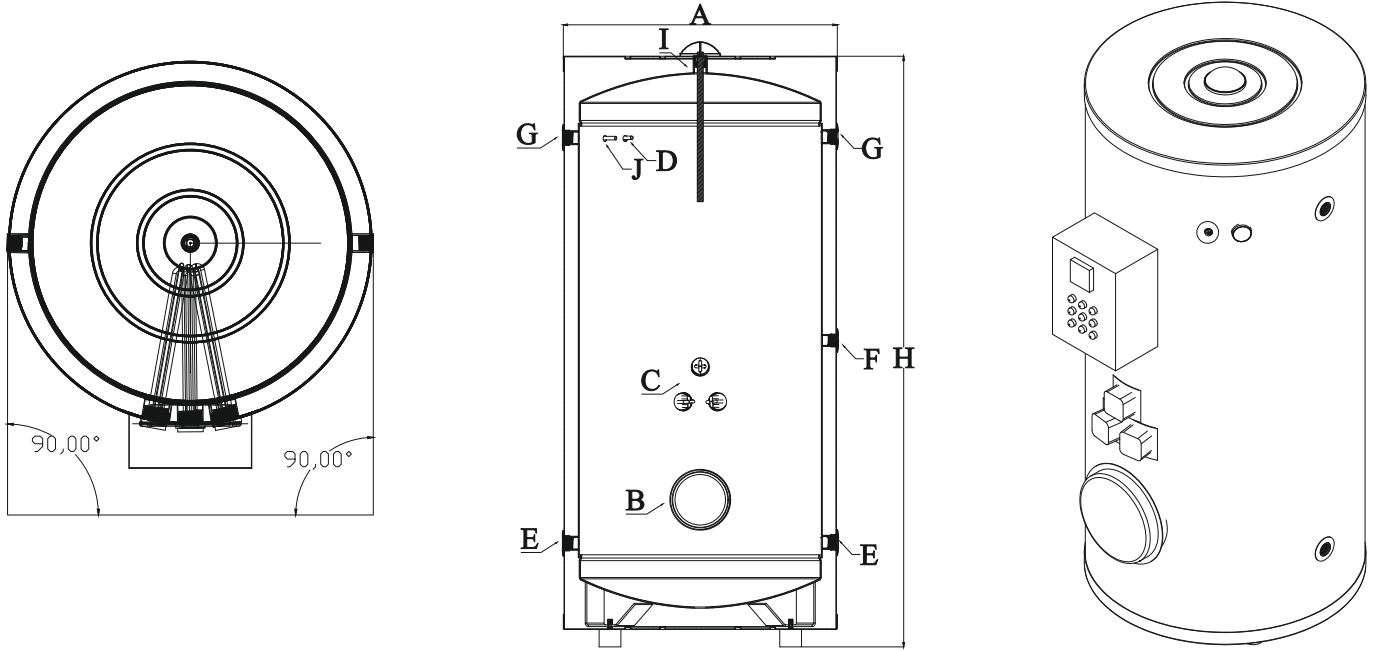
Insulation

50 mm thick, 40 density polyurethane for 500 to 1.000 liters.
High-density special foam is used for capacities from 1.500 to 2.000 liters.



- Highly efficient with a wider serpentine surface
- Practical, economical, modern
- High-quality and certified materials
- Enamelled
- Cathodically protected





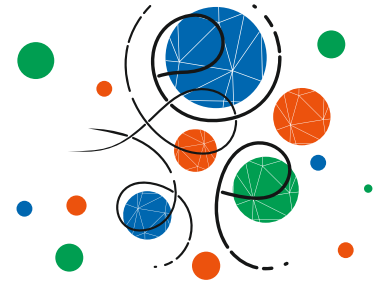
ELECTRIC BOILER TECHNICAL DETAILS

DEFINITION	CODE	UNIT							
Volume	V	Liter	200	300	500	800	1000	1500	2000
Insulation Type	-	type	PU	PU	PU	PU	PU	Sponge	Sponge
Insulation Thickness	-	mm	50	50	50	50	50	50	50
Diameter	A	mm	550	650	750	850	950	1200	1200
Height	H	mm	1380	1650	1650	1700	2100	2000	2300
Cleaning Neck	B	DN	-	115	115	115	115	200	200
Electrical Panel	KW		5	10	15	20	30	30	45
Resistance Connection	C	inch	2	2	2	2	2	2	2
Number of Heater Sleeves	-	pcs.	1	2	2	2	3	3	3
Thermometer Housing	D	inch	1/2	1/2	1/2	1/2	1/2	1/2	1/2
Cold Water Inlet Connection	E	inch	1 1/4	1 1/4	1 1/4	1 1/4	1 1/4	2	2
Circulation Connection	F	inch	3/4	1	1 1/4	1 1/4	1 1/4	1 1/4	1 1/4
Hot Water Outlet Connection	G	inch	1 1/4	1 1/4	1 1/4	1 1/4	1 1/4	2	2
Anode Rod Connection	I	inch	1 1/4	1 1/4	1 1/4	1 1/4	1 1/4	1 1/4	1 1/4
Thermocouple Socket	J	inch	1/2	1/2	1/2	1/2	1/2	1/2	1/2
Dry Weight	-	kg	65	97	145	200	215	365	515
Area Covered	-	m ³	0,45	087	1,02	1,30	1,94	2,88	3,32
Outer Cover	-	type	Vinlex	Vinlex	Vinlex	Vinlex	Vinlex	Vinlex	Vinlex

Note: OMEGA YENİLENEBİLİR ENERJİ LTD. ŞTİ. reserves the right to make alterations to the design dimensions. Please allow a tolerance of ±20 cm for product dimensions during shipping.



SOLAR WATER HEATERS



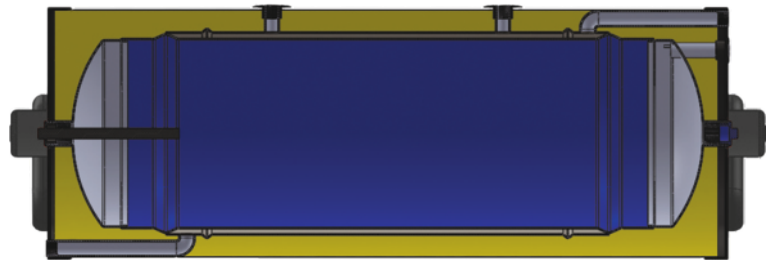
Volume: 120 to 300 liters.
Maximum Water Temperature: 90°C
Test Pressure: 13 Bar
Operating Pressure: 10 Bar
Inner Surface Coating: Enamel

Outer Casing

Polyurethane over galvanised anthracite grey electrostatically powder coated

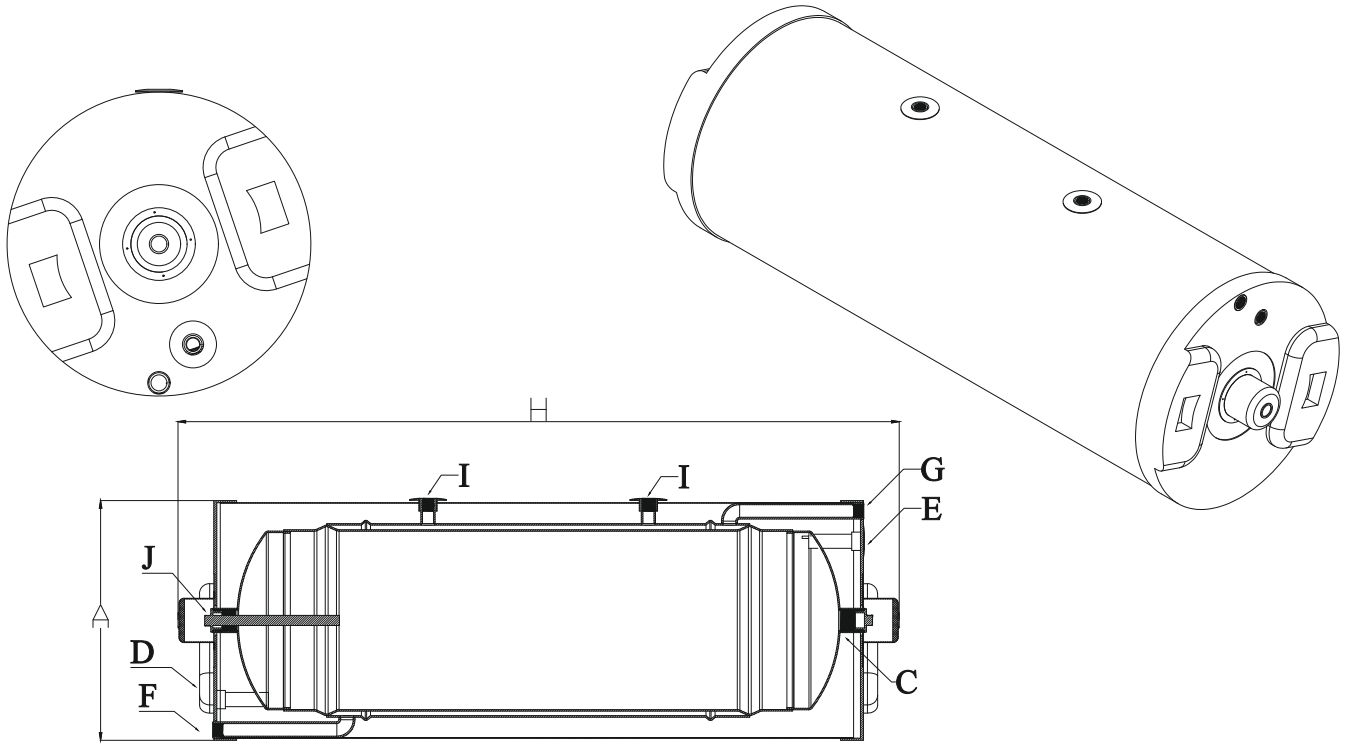
Insulation

Made of polyurethane with a thickness of 50 mm and a density of 40 kg/m³



- Practical, economical, modern
- High-quality and certified materials
- Enamelled
- Cathodically protected
- Thermometer included
- Long-lasting and durable





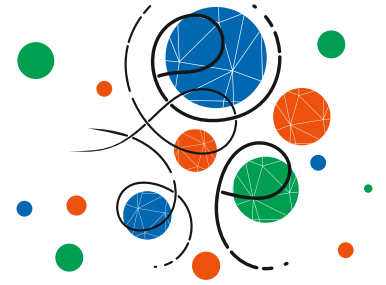
SOLAR WATER HEATERS TECHNICAL DETAILS

DEFINITION	CODE	UNIT				
Volume	V	Liter	120	150	180	300
Insulation Type	-	type	PU	PU	PU	PU
Insulation Thickness	-	mm	75	75	75	75
Diameter	A	mm	480	480	480	600
Length	H	mm	1400	1600	1900	1900
Cleaning Flange	B	DN	-	-	-	-
Resistance Connection	C	inch	1 1/4	1 1/4	1 1/4	1 1/4
Number of Heater Elements	-	pcs.	1	1	1	1
System Water Inlet Connection	D	inch	3/4	3/4	3/4	3/4
Hot Water Outlet Connection	E	inch	3/4	3/4	3/4	3/4
Collector Inlet	F	inch	3/4	3/4	3/4	3/4
Collector Return	G	inch	3/4	3/4	3/4	3/4
Ventilation	I	inch	3/4	3/4	3/4	3/4
Anode Rod Connection	J	inch	1 1/4	1 1/4	1 1/4	1 1/4
Covered Area	-	m ³	0,67	0,77	0,92	1,15
Outer Casing	-	type	Metal	Metal	Metal	Metal

Note: OMEGA YENİLENEBİLİR ENERJİ LTD. ŞTİ. reserves the right to make alterations to the design dimensions. Please allow a tolerance of ±20 cm for product dimensions during shipping.



SOLAR WATER HEATERS



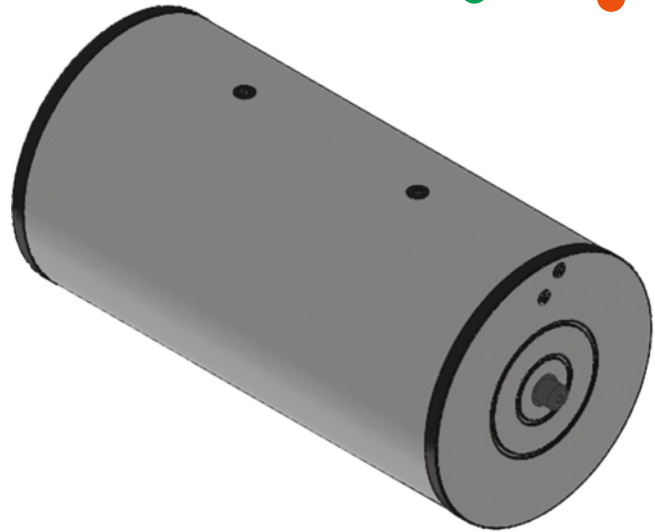
Volume: From 500 liters to 1.250 liters.
Maximum Water Temperature: 90°C
Test Pressure: 13 Bar
Operating Pressure: 10 Bar
Internal Surface Coating: Enamel

External Casing

Polyurethane over galvanised anthracite
grey electrostatically powder coated

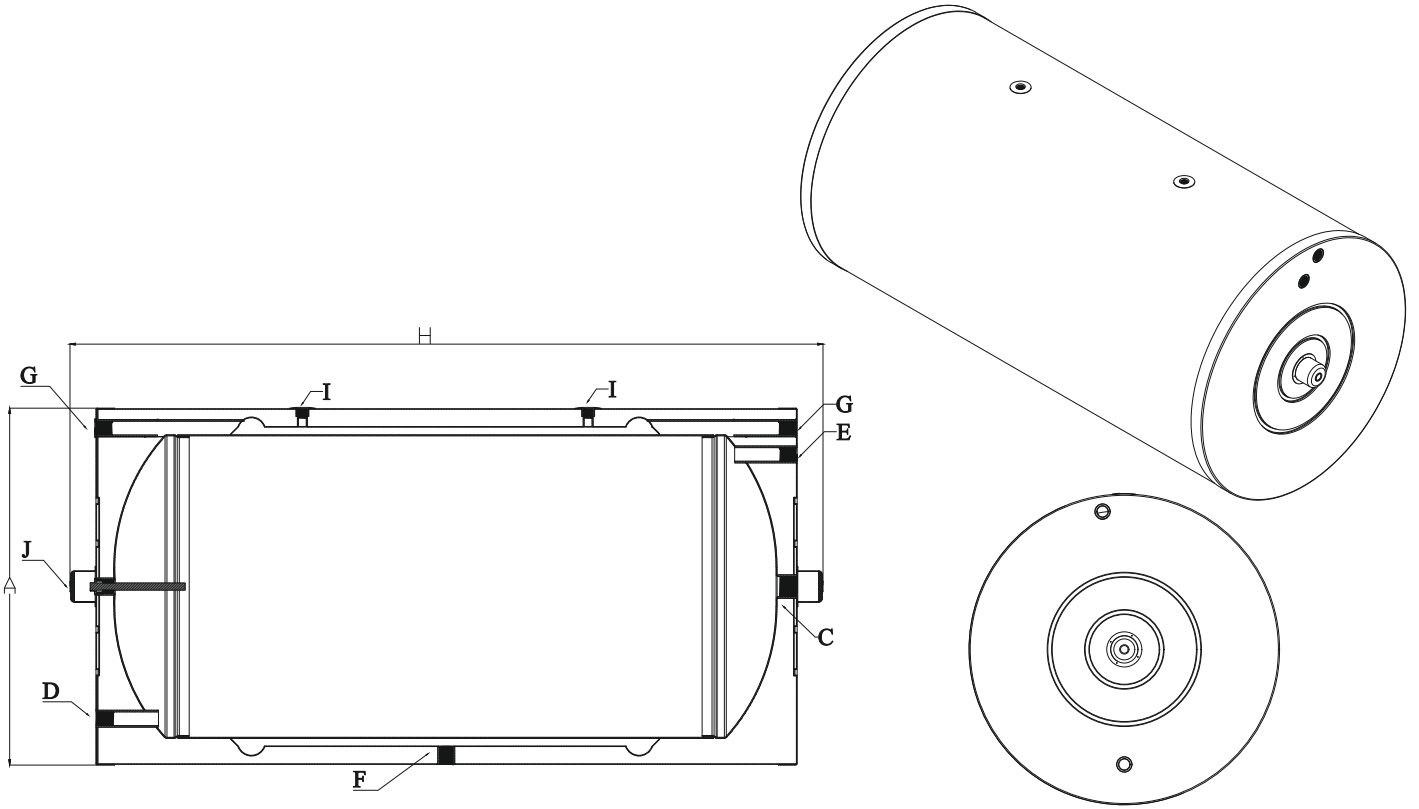
Insulation

Made of polyurethane with a thickness
of 50 mm and a density of 40 kg/m³



- Practical, economical, modern
- High-quality and certified materials
- Enamelled
- Cathodically protected
- Thermometer included
- Long-lasting and durable





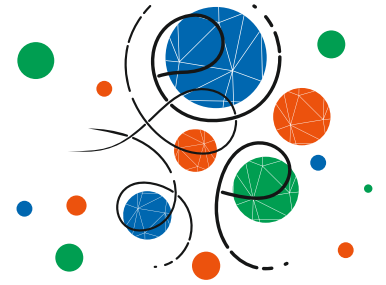
SOLAR WATER HEATERS TECHNICAL DETAILS

DEFINITION	CODE	UNIT				
Volume	V	Liter	500	800	1000	1250
Insulation Type	-	type	PU	PU	PU	PU
Insulation Thickness	-	mm	75	75	75	75
Diameter	A	mm	750	850	1000	1000
Length	H	mm	1700	1750	2150	2350
Cleaning Flange	B	DN	-	-	-	-
Resistance Connection	C	inch	2	2	2	2
Number of Heater Elements	-	pcs.	1	1	1	1
System Water Inlet Connection	D	inch	1	1	1 1/4	1 1/4
Hot Water Outlet Connection	E	inch	1	1	1 1/4	1 1/4
Collector Inlet	F	inch	1	1 1/4	1 1/4	1 1/4
Collector Return	G	inch	3/4	1	1	1 1/4
Ventilation	I	inch	3/4	3/4	3/4	3/4
Anode Rod Connection	J	inch	1 1/4	1 1/4	1 1/4	1 1/4
Covered Area	-	m ³	1,28	1,5	2,15	2,35
Outer Casing	-	type	Metal	Metal	Metal	Metal

Note: OMEGA YENİLENEBİLİR ENERJİ LTD. ŞTİ. reserves the right to make alterations to the design dimensions. Please allow a tolerance of ±20 cm for product dimensions during shipping.



HORIZONTAL WALLED BOILERS



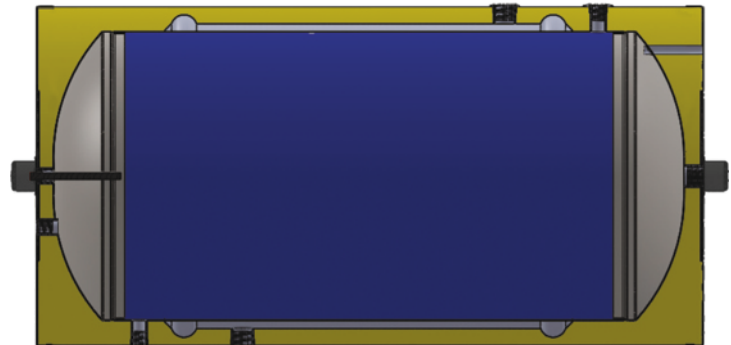
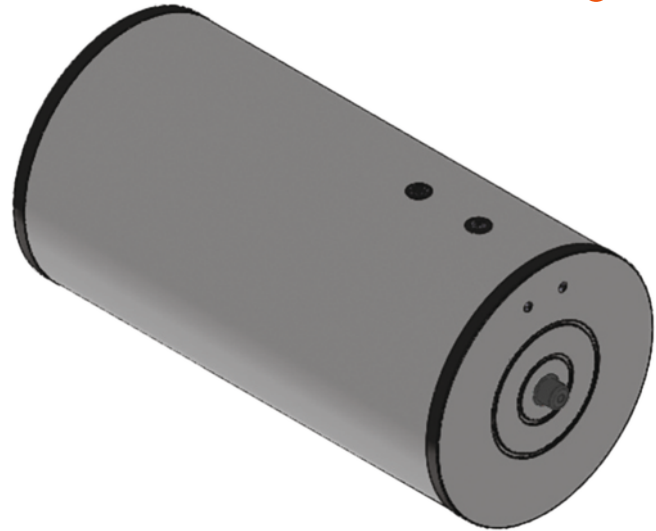
Volume: 1.500 liters to 5.000 liters.
Maximum Water Temperature: 90°C
Test Pressure: 13 Bar
Operating Pressure: 10 Bar
Internal Surface Coating: Enamel

External Casing

Polyurethane over galvanised anthracite
grey electrostatically powder coated

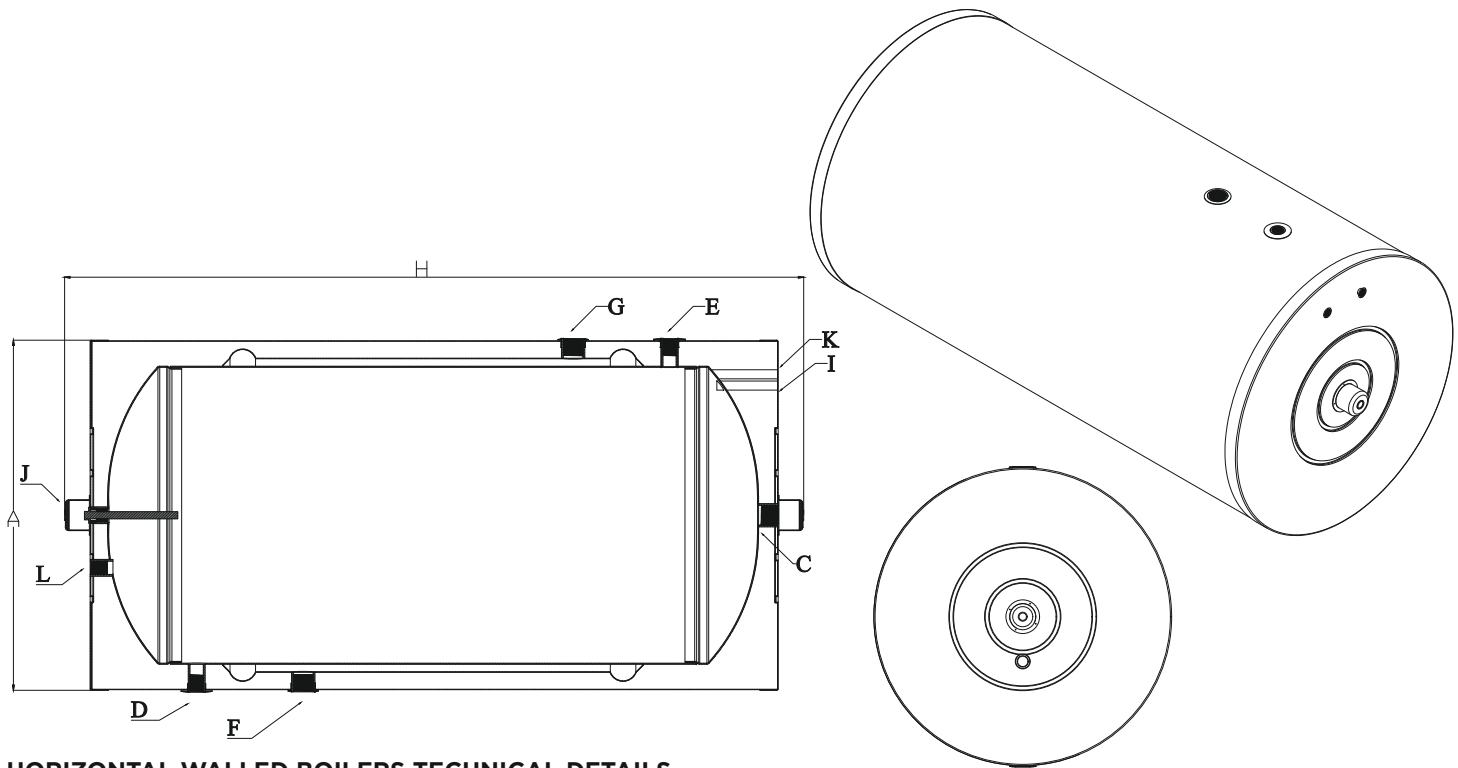
Insulation

Made of polyurethane with a thickness of 50 mm
and a density of 40 kg/m³



- Practical, economical, modern
- High-quality and certified materials
- Enamelled
- Cathodically protected
- Thermometer included
- Long-lasting and durable





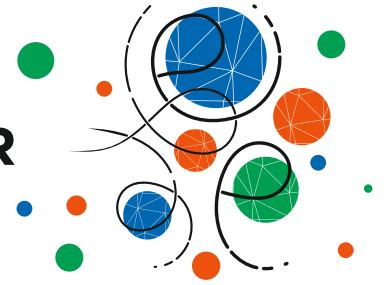
HORIZONTAL WALLED BOILERS TECHNICAL DETAILS

DEFINITION	CODE	UNIT						
Volume	V	Liter	1500	2000	2500	3000	4000	5000
Insulation Type	-	type	PU	PU	PU	PU	PU	PU
Insulation Thickness	-	mm	75	75	75	75	75	75
Diameter	A	mm	1000	1100	1100	1300	1300	1400
Length	H	mm	2650	2650	3150	3350	4250	4300
Cleaning Flange	B	DN	-	-	-	-	-	-
Resistance Connection	C	inch	2	2	2	2	2	2
Number of Heater Elements	-	pcs.	1	1	1	1	1	1
System Water Inlet Connection	D	inch	1 1/2	1 1/2	1 1/2	2	3	3
Hot Water Outlet Connection	E	inch	1 1/2	1 1/2	1 1/2	2	3	3
Collector Inlet	F	inch	2	2	2	2 1/2	3	3
Collector Return	G	inch	2	2	2	2 1/2	3	3
Thermometer	I	inch	1/2	1/2	1/2	1/2	1/2	1/2
Anode Rod Connection	J	inch	1 1/4	1 1/4	1 1/4	1 1/4	1 1/4	1 1/4
Heat Probe	K	inch	1/2	1/2	1/2	1/2	1/2	1/2
Circulation	L	inch	1 1/4	1 1/4	1 1/4	1 1/4	1 1/4	1 1/4
Area Covered	-	m ³	2,65	3,2	3,81	5,66	7,18	8,42
Outer Casing	-	type	Metal	Metal	Metal	Metal	Metal	Metal

Note: OMEGA YENİLENEBİLİR ENERJİ LTD. ŞTİ. reserves the right to make alterations to the design dimensions. Please allow a tolerance of ±20 cm for product dimensions during shipping.



HORIZONTAL WALL-MOUNTED COIL BOILER



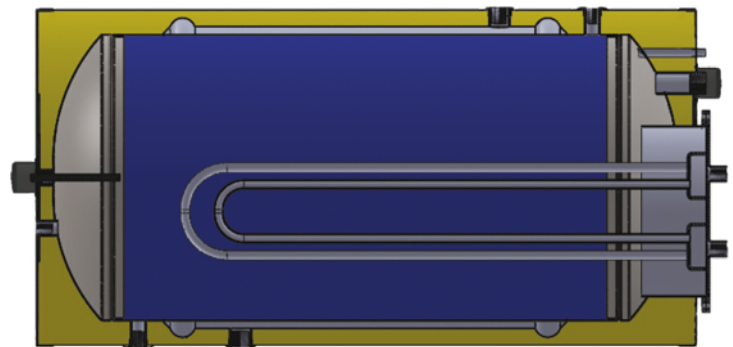
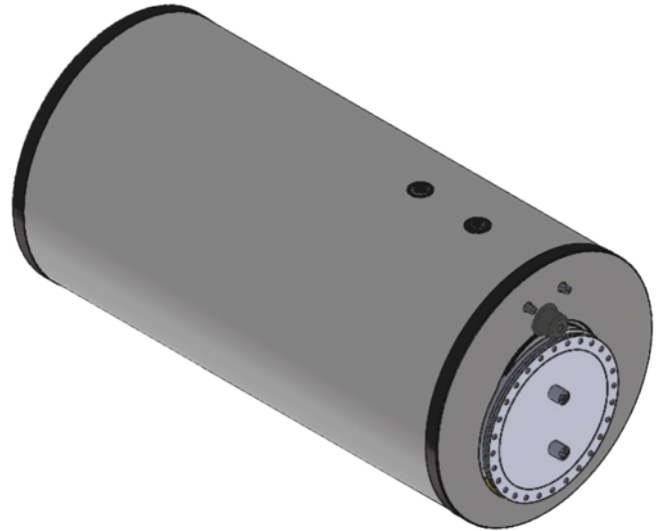
Volume: From 15.000 liters to 5.000 liters.
Maximum Water Temperature: 90°C
Test Pressure: 13 Bar
Operating Pressure: 10 Bar
Internal Surface Coating: Enamel

External Casing

Polyurethane over galvanised anthracite
grey electrostatically powder coated

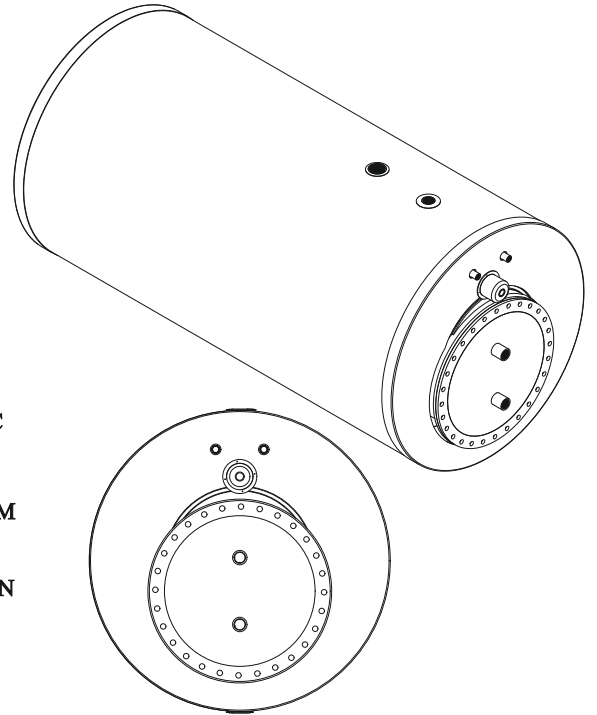
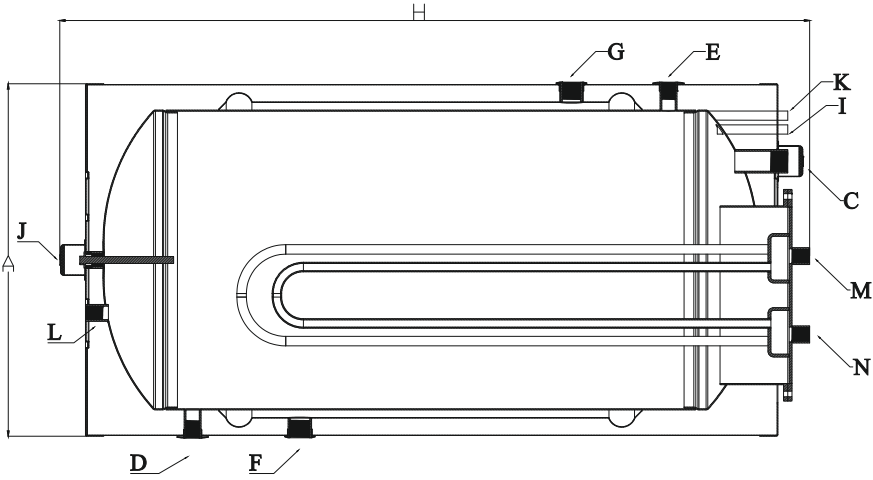
Insulation

Made of polyurethane with a thickness of
50 mm and a density of 40 kg/m³



- Practical, economical, modern
- High-quality and certified materials
- Enamelled
- Cathodically protected
- Thermometer included
- Long-lasting and durable





HORIZONTAL WALL-MOUNTED COIL BOILER TECHNICAL DETAILS

DEFINITION	CODE	UNIT	1500	2000	2500	3000	4000	5000
Volume	V	Liter	1500	2000	2500	3000	4000	5000
Insulation Type	-	type	PU	PU	PU	PU	PU	PU
Insulation Thickness	-	mm	75	75	75	75	75	75
Diameter	A	mm	1000	1100	1100	1300	1300	1400
Length	H	mm	2750	2750	3250	3450	4350	4400
Resistance Connection	C	inch	2	2	2	2	2	2
Number of Heater Elements	-	pcs.	1	1	1	1	1	1
System Water Inlet Connection	D	inch	1 1/2	1 1/2	1 1/2	2	3	3
Hot Water Outlet Connection	E	inch	1 1/2	1 1/2	1 1/2	2	3	3
Collector Inlet	F	inch	2	2	2	2 1/2	3	3
Collector Return	G	inch	2	2	2	2 1/2	3	3
Thermometer	I	inch	1/2	1/2	1/2	1/2	1/2	1/2
Anode Rod Connection	J	inch	1 1/4	1 1/4	1 1/4	1 1/4	1 1/4	1 1/4
Temperature Probe	K	inch	1/2	1/2	1/2	1/2	1/2	1/2
Circulation	L	inch	1 1/4	1 1/4	1 1/4	1 1/4	1 1/4	1 1/4
Coil Water Inlet	M	inch	1 1/4	1 1/4	1 1/4	1 1/4	1 1/4	1 1/4
Coil Water Outlet	N	inch	1 1/4	1 1/4	1 1/4	1 1/4	1 1/4	1 1/4
Covered Area	-	m ³	2,75	3,32	3,93	5,83	7,35	8,62
Outer Casing	-	type	Metal	Metal	Metal	Metal	Metal	Metal

Note: OMEGA YENİLENEBİLİR ENERJİ LTD. ŞTİ. reserves the right to make alterations to the design dimensions. Please allow a tolerance of ±20 cm for product dimensions during shipping.

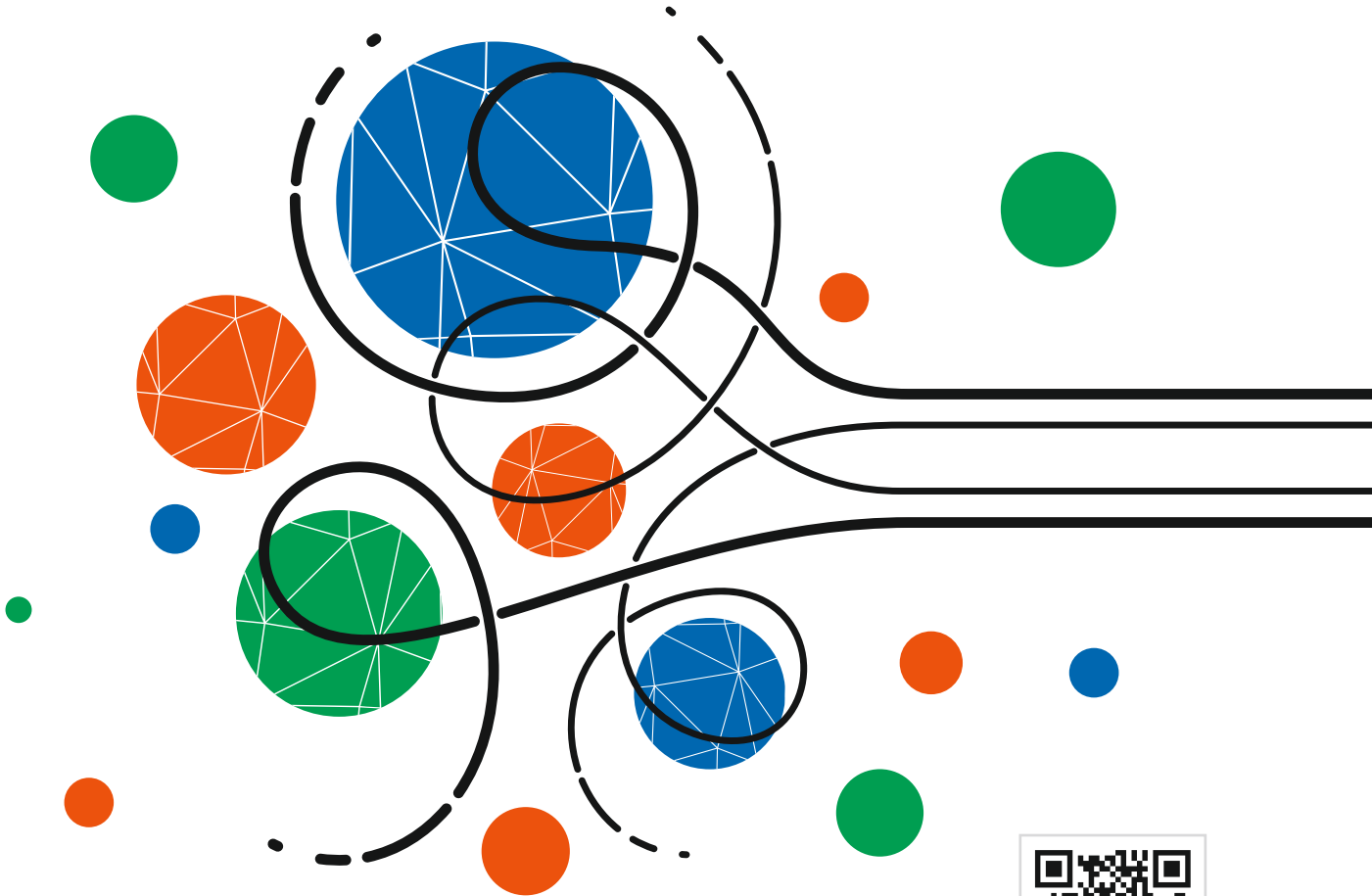




OMEGA Establishments



OMEGA YENİLENEBİLİR ENERJİ SİS. MAK. METAL SAN. TİC. LTD. ŞTİ.
T.: +90232 457 87 27 / +90533 506 05 04 / +90534 520 80 99
İstiklal Mahallesi 9144 Sokak No:23/1 Kemalpaşa İzmir Turkey
info@omegaboyler.com.tr
www.omegaboyler.com.tr



Baskı No : EN01 011025